

# 2024 RL National Championships 51st Anniversary



Monday 8th January to Friday 12th January 2024



## SAILING INSTRUCTIONS

Organizing Authority

**PORT OF YAMBA YACHT CLUB**

Yamba Marina  
3 Yamba Road Yamba NSW 2464



[www.portofyambayachtclub.com.au](http://www.portofyambayachtclub.com.au)

## TABLE OF CONTENTS

1. RULES.....	3
2. NOTICES TO COMPETITORS.....	3
3. CHANGES IN SAILING INSTRUCTIONS.....	3
4. SIGNALS MADE ASHORE.....	4
5. SCHEDULE OF RACES.....	4
6. CLASS FLAGS.....	5
7. RACING AREA, RIGGING & PARKING.....	5
8. THE COURSES.....	5
9. MARKS.....	5
10. AREAS THAT ARE OBSTRUCTIONS.....	5
11. THE START.....	5
12. CHANGE OF THE NEXT LEG OF THE COURSE.....	6
13. THE FINISH.....	6
14. PENALTY SYSTEM.....	6
15. TIME LIMIT.....	6
16. PROTESTS.....	6
17. SCORING.....	7
18. SAFETY REGULATIONS.....	7
19. REPLACEMENT OF CREW OR EQUIPMENT.....	8
20. EQUIPMENT AND MEASUREMENT CHECKS.....	8
21. OFFICIAL BOATS.....	8
22. TRASH DISPOSAL.....	8
23. BERTHING.....	8
24. RADIO/PHONE COMMUNICATION.....	8
25. PRIZES.....	8
26. USE OF CLASS BASED HANDICAPS (CBH).....	9
27. RISK STATEMENT.....	9
28. FOR FURTHER INFORMATION,.....	10
APPENDIX A.1 – RACING AREA, RIGGING & PARKING.....	10
APPENDIX B - COURSES.....	11

**PLEASE NOTE THE FOLLOWING SAILING INSTRUCTIONS- VERSION 10- WERE ISSUED AT 1800HRS ON SUNDAY 7<sup>TH</sup> JANUARY 2024 AND ARE THE FINAL SAILING INSTRUCTIONS TO BE ISSUED**

**ALL PREVIOUS SAILING INSTRUCTIONS ARE TO BE DISREGARDED.**

## 1. RULES

- 1.1 The Regatta will be governed by the rules as defined in the current Racing Rules of Sailing (RRS) including the Australian Sailing (AS) Prescriptions.
- 1.2 The current Special Regulations (SR) of AS Part 1, Category 7.
- 1.3 SR 3.24.3 & 3.24.4 applies (a Propulsion engine must be mounted at all times and the mounting may be raised but not removed) with a minimum of 9 litres of fuel being carried at the start of each race.  
  
SR 5.01.1 (j) applies whilst a boat is afloat (A lifejacket complying with AS4758-2015 (minimum Level 50) or AS1512-1996 Type 1 or Type 2 shall be worn by each crew member).
- 1.4 The Rules of the RL24 Owners Association
- 1.5 When conflict occurs between the Notice of Race and the Sailing Instructions, the rules of the Sailing Instructions shall prevail. This changes RRS 63.7.
- 1.7 The *International Regulations for the Prevention of Collisions at Sea 1972* (COLREGS) shall apply at all times. The *Racing Rules of Sailing* (RRS) will apply only between those ships that are participating in the event, for the duration of the event. Should interaction occur with nonparticipating ships, then COLREGS shall apply to all ships and shall over-ride all other rules. This is a condition imposed by Local Governing Authorities.
- 1.8 All competitors are reminded of RRS Part 1.1 Helping Those in Danger, “A boat or competitor shall give all possible help to any person or vessel in danger”.
- 1.9 All competitors are reminded of RRS 3 Decision to Race, “The responsibility for a boat’s decision to participate in a race or to continue racing is hers alone”.

## 2. NOTICES TO COMPETITORS.

- 2.1 Notices to competitors will be posted on the official notice board located inside the Port of Yamba Yacht Club.

## 3. CHANGES IN SAILING INSTRUCTIONS.

- 3.1 Any changes in the Sailing Instructions will be posted on the official notice board before 0900 hours on the day it will take effect, except any change to the schedule of races will be posted by 1800 hours on the day before it will take effect.
- 3.2 Attention may be drawn to the posting to SI Amendments by the display of the PYYC Pennant from the front verandah of the club.

#### 4. SIGNALS MADE ASHORE.

- 4.1 Signals made ashore will be displayed at the PYYC clubhouse.
- 4.2 When flag AP is displayed ashore '1 minute' is replaced with 'not less than 30 minutes' in the race signal AP.

#### 5. SCHEDULE OF RACES.

Events are scheduled in the regatta as follows: \* denotes that in the event of a Re-sail Opportunity a Compulsory Skippers Briefing will be held at 9.00am

DATE	DETAILS	TIMES
Sunday 7 <sup>th</sup> January 2024	<b>ARRIVAL &amp; RL24OAA Welcome BBQ RL24 ASSOC</b> Arrival and Registration at Port of Yamba Yacht Club.	0900hrs – 1600hrs 1600hrs
Monday 8 <sup>th</sup> January 2024	<b>Rob Legg Invitation Series Races 1, 2 &amp; 3 (back to back)</b> Compulsory Skippers Briefing 1 <sup>st</sup> Warning Signal	1100hrs 1300hrs
Tuesday 9 <sup>th</sup> January 2024	<b>Championship Heats 1 and 2 (back-to-back)</b> Compulsory Skippers Briefing 1 <sup>st</sup> Warning Signal AGM PYYC Yamba Club Room	1100hrs 1230hrs 1800hrs
Wednesday 10 <sup>th</sup> January 2024	<b>Championship Heats 3 and 4 (back-to-back)</b> Re-sail Opportunity* Skippers Briefing 1 <sup>st</sup> Warning Signal	1100hrs 1230hrs
Thursday 11 <sup>th</sup> January 2024	<b>Championship Heats 5 and 6 (back-to-back)</b> Re-sail Opportunity* - Skippers Briefing 1 <sup>st</sup> Warning Signal.	1100hrs 1230hrs
Friday 12 <sup>th</sup> January 2024	<b>Championship Heat 7.</b> Skippers Briefing 1 <sup>st</sup> Warning Signal (Resail opportunity if required, after end of Heat 7) Presentation Dinner at Maclean Hotel Maclean	0930hrs 1100hrs 1800hrs

- 5.1 Four (4) races shall constitute a series.
- 5.2 A maximum of three (3) races can be sailed per day.

5.3 No Warning Signal will be made after 1330hrs on Friday 12<sup>th</sup> January 2024.

## 6. CLASS FLAGS.

6.1 The class flag will be the RL24 Class Association Flag.

## 7. RACING AREA, RIGGING & PARKING.

7.1 Appendix A shows the approximate location of the racing, rigging & parking areas.

## 8. THE COURSES

8.1 The diagrams in Appendix B shows the approximate position of the rounding marks, the order in which marks are to be passed and the side on which each mark is to be passed.

Mark 1 is the Windward mark, mark 2 is the Wing mark and Mark 3 is the Leeward mark

8.2 The course number to be sailed will be indicated by the relevant numeral pennant being displayed on the RCV.

## 9. MARKS.

9.1 Mark's 1, 2, 3 will be ORANGE vertical cylindrical inflatable buoy's measuring approximately 1.2m x 0.3metres.

9.2 All navigation marks (red and green) are to observed as marks of the course unless otherwise nominated.

9.3 The Start/Finish Mark will be a black and white chequered inflatable bouys.

## 10. AREAS THAT ARE OBSTRUCTIONS

10.1 The Start/Finish line is an obstruction of the course unless starting or finishing.

10.2 All boats shall maintain a minimum distance of 3 metres from all International Association of Marine Aids to Navigation and Lighthouse Authorities (IALA) marks\*. This is a condition governed by local Statutory Authorities for the OA's approved Aquatic Event Authority.

All boats shall give due consideration to the weather conditions including tidal effect (current), wind conditions, rigging including spar positions and their intended course when passing or rounding an IALA mark. \*Competitors may refer to the Course Maps – yet to be posted on the PYYC ([www.portofyambayachtclub.com.au](http://www.portofyambayachtclub.com.au)), or Navionics for detailed maps.

## 11. THE START.

11.1 Races will be started by using RRS26 with the warning signal made five (5) minutes before the starting signal.

11.2 The starting line will be between a staff displaying a blue flag on the Race Committee signal vessel (RCV) and the 2 BLACK/WHITE checked vertical cylindrical start/finish mark measuring 1.2m x 0.3m) in addition to a staff displaying an orange flag on the Race Committee signal vessel at the port- end start/finish mark.

11.3 There may be an orange teardrop barging buoy off the stern of the RCV. When laid this mark is a mark of the course and is to be taken to starboard when starting.

- 11.4 A boat starting later than four (4) minutes after her starting signal will be scored Did Not Start without a hearing. This changes RRS 35, A4 and A5.

## 12. CHANGE OF THE NEXT LEG OF THE COURSE.

- 12.1 The Race Committee may change a leg of the course that begins at a rounding *mark* by changing the position of the next *mark* and signalling all boats before they begin the leg. The next *mark* need not be in position at that time.
- 12.2 A change of course will be signalled by a plain white flag displayed with repeated sound signals. (Amends RRS Race signals)
- 12.3 A red or green flag may be displayed on the RCV to indicate if the new mark has been moved to port or starboard of the old mark.

## 13. THE FINISH.

- 13.1 The finishing line will be between a staff displaying an orange flag on the RCV at the starboard end and the finish mark at the port end.

## 14. PENALTY SYSTEM.

- 14.1 The penalty for breaking a rule of Part 2 shall be a One Turn Penalty except that for infringements occurring within the Zone as defined in RRS shall be a Two Turns Penalty. This changes RRS 44.1 and 44.2.

## 15. TIME LIMIT.

- 15.1 The time limit for the first boat to complete the course is 100 minutes.
- 15.2 If no boat has passed Mark 1 within 45 minutes the race will be abandoned.
- 15.3 Boats failing to finish within 30 minutes of the first boat to finish will be scored DNF.

## 16. PROTESTS.

- 16.1 Boats intending to protest shall inform the Race Committee immediately after finishing the race by approaching the starboard side of the Race Committee signal vessel and hailing the protested boat's sail number. This changes RRS 61.1
- 16.2 Protest forms are available from the Sailing Office (internal - western end of the host clubhouse) or the Race Officer. Protests and requests for redress or reopening shall be delivered there within the appropriate time limit. A fee of \$150 is payable with lodgement.
- 16.3 The protest time limit is 90 minutes after the last boat has finished the last race of the day.
- 16.4 Notices will be posted no later than 30 minutes after the protest time limit to inform competitors of hearings in which they are parties or named as witnesses. Hearings will be held in the Port of Yamba Yacht Club Sailing Office beginning at the time posted.

- 16.5 Notices or protests by the Race Committee will be posted on the official clubhouse/regatta noticeboard to inform boats under rule 61.1(b).
- 16.6 Breaches of Sailing Instruction's 1.3 and 10 will not be grounds for protest by a boat. Penalties for these breaches will incur a 3-place scoring penalty for each infringement of each race incurred. The scoring abbreviation for a discretionary penalty imposed under this instruction will be DPI. This changes RRS rule 60.1.
- 16.7 On the last scheduled day of racing a request for reopening a hearing shall be delivered:
- 16.7.1 within the protest time limit, if the requesting party was informed of the decision on the previous day:
- 16.7.2 no later than 30 minutes after the requesting party was informed of the decision on that day. This changes RRS rule 66.

## 17. SCORING.

- 17.1 The Low Point scoring system, RRS Appendix A4 will apply with the 'First' Finishing place being scored 0.75 points. This changes RRS A4.
- 17.2 Four (4) races are required to be completed to constitute a series.
- 17.3 If fewer than 5 races are sailed, then a boats series score will be the total of all her race scores.
- 17.4 When from five to six races have been completed, a boat's series score will be the total of her race scores excluding her worst score.
- 17.5 When seven races are completed, a boat's series score will be the total of her race scores excluding her two worst scores.

An official Handicapper provided by the RL24 Association OAA will oversee all Handicapping calculations and related scoring.

## 18. SAFETY REGULATIONS.

- 18.1 For each race or race session each competitor intending to race shall personally "sign-on", by completing the appropriate details on the "sign-on/off" sheet located in the PYYC Or, by VHF radio channel 72 with the RCV prior to the warning signal. This changes RRS 63.
- Failure to comply with this Sailing Instruction will result in a boat scoring DNC for the races of the session without a hearing. This changes RRS 63.
- 18.2 All boats shall "sign-off" upon returning to shore by completing the appropriate details on the "sign- on/off" sheet located in the PYYC no later than the end of protest time for that day. Sign off may also be completed by contacting the RCV on VHF Channel 72.
- Failure to comply with this Sailing Instruction will result in a boat scoring DNF for the races of the session without a hearing.
- This changes RRS 63.1.
- 18.3 Sign on / Sign off ashore is automatically accepted for one or more races of each "on water" session.

- 18.4 The skipper of a boat that retires or does not intend to continue racing is required to immediately notify the RCV via VHF72.

## 19. REPLACEMENT OF CREW OR EQUIPMENT

- 19.1 Substitution of damaged or lost equipment will not be allowed unless authorized by the Race Committee. Requests for substitution shall be made at the first reasonable opportunity.

## 20. EQUIPMENT AND MEASUREMENT CHECKS

- 20.1 The Race Committee may spot check boats at any time during the Regatta. A boat notified of inspection shall follow the instructions of the Race Committee. The penalty for boats failing to measure in accordance with the rules will be a score of DSQ in all races until the failure to comply has been rectified. This changes RRS 64.1.

## 21. OFFICIAL BOATS

- 21.1 Official boats will be marked with the PYYC burgee.

## 22 TRASH DISPOSAL

- 22.1 Boats shall not put trash in the water. Trash may be placed aboard Support and Race Committee boats.

## 23. BERTHING

- 23.1 Boats shall be kept in their assigned rigging and storage areas.
- 23.2 Trailers shall be kept in their assigned area/s, which may include an unsecured open space area that is accessible to the public.

## 24. RADIO/PHONE COMMUNICATION.

- 24.1 Boats are advised to carry a VHF radio. Course changes, urgent weather information or other emergency or race information may be communicated to the fleet via the RCV.
- 24.2 A boat shall neither make transmissions while racing nor receive communications not available to all boats. This includes Mobile phone communications.
- 24.3 Communications from the RCV to competitors will be made on VHF Channel 72

## 25. PRIZES.

Each entrant will receive a 51st National Championship memento. Prizes will be awarded for:

- Drop Keel Champion (Rob Legg Perpetual Trophy).
- Swing Keel Champion (Rob Legg Perpetual Trophy).
- Handicap Trophy (Perpetual Trophy)
- Rob Legg Invitation Series Trophy (Perpetual Trophy)
- Cruising Division Champion- depending on numbers of entries.
- Coolibah Trophy (Perpetual Trophy)
- Oldest Skipper Flag (Perpetual Trophy)
- Toad of Barmera Trophy (Perpetual Trophy)



- Other prizes may be awarded as determined by the RL24 OAofA. The **Coolibah Trophy** is teams based on the following guidelines:
  - i. The Coolibah Trophy is awarded to a team comprising of the best 3 boats competing from each state.
  - ii. The Trophy is based on the Championship results for all heats of the Nationals.
  - iii. When there are insufficient boats from within one or two states to form a state-based team, then boats are formed into a team drawn out of a hat at the initial briefing held before the invitational series. The 'state' team is determined by the majority of state-based boats in that team. If there is only one boat for each state in the team, then that team selects their 'state'.

The **Rob Legg Invitation Series Trophy** is based on the following guideline:

- i. All 3 heats of the invitation races will count.
- ii. The CBH corrected time for each boat will be used for calculating final places in each of the 3 races of the Invitation Series.

## 26. USE OF CLASS BASED HANDICAPS (CBH).

### 26.1 Class Based Handicap (CBH)

CBH Calculations **based on the ATYSB July 2017 Rule of Australian Sailing** will be used in the Rob Legg Invitation series. CBH calculations will not be required in the Championship series unless divisions are combined by the Race Committee

### 26.2 Performance Based Handicap (PBH).

All RL24s will be assigned a PBH based on the 3 results from the 3 heats of the Invitation Series. The PBH will be used for determining the recipient of the Handicap Trophy. For each heat of the series, the PBH for an individual RL24 will be adjusted as follows:

- i) for first place by +0.04;
- ii) for second place by +0.02;
- iii) for third place by +0.01.
- iv) For a second fourth place over the series, a boat will have its PBH adjusted by +0.01

A Boat's elapsed time (recorded as minutes or part thereof) is multiplied by its PBH correction factor to produce a corrected Handicap time. Handicap series results will be based on this corrected time result for places and points.

## 27. RISK STATEMENT

27.1 Competitors participate in the Regatta entirely at their own risk - RRS 3 states: 'The responsibility for a boat's decision to participate in a race or to continue to race is hers alone.'

27.2 By participating in this event each competitor agrees and acknowledges that sailing is a potentially dangerous activity with inherent risks. These risks include strong winds and rough seas, sudden changes in weather, failure of equipment, boat handling errors, poor seamanship by other boats, loss of balance on an unstable platform and fatigue resulting in increased risk of injury. Inherent in the sport of sailing is the risk of permanent, catastrophic injury or death by drowning, trauma, hypothermia or other causes.

**SAILING INSTRUCTIONS – 2024 RL 24 National Championships 51<sup>st</sup> Anniversary**

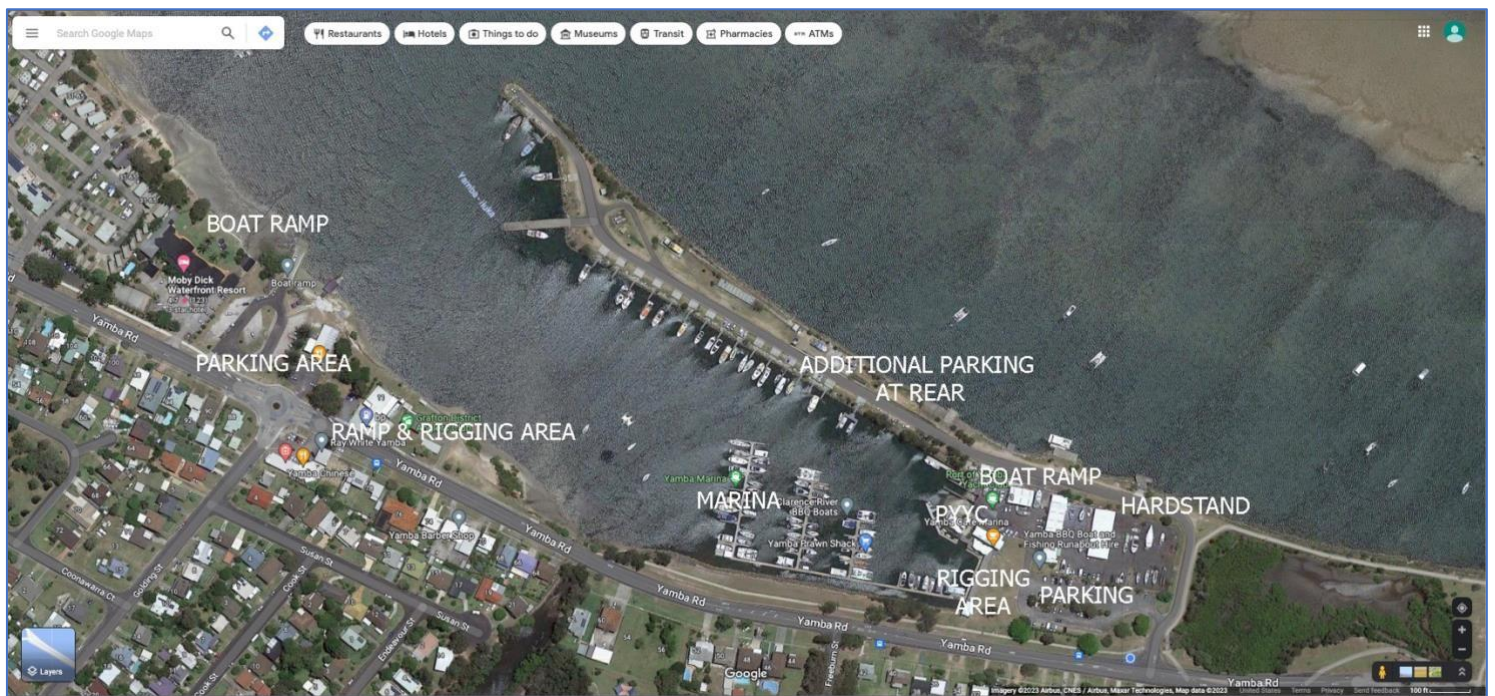
The Organising Authority and Australian Sailing will not accept any liability for material damage or personal injury or death sustained in conjunction with or prior to, during, or after the event.

**28. FOR FURTHER INFORMATION,**

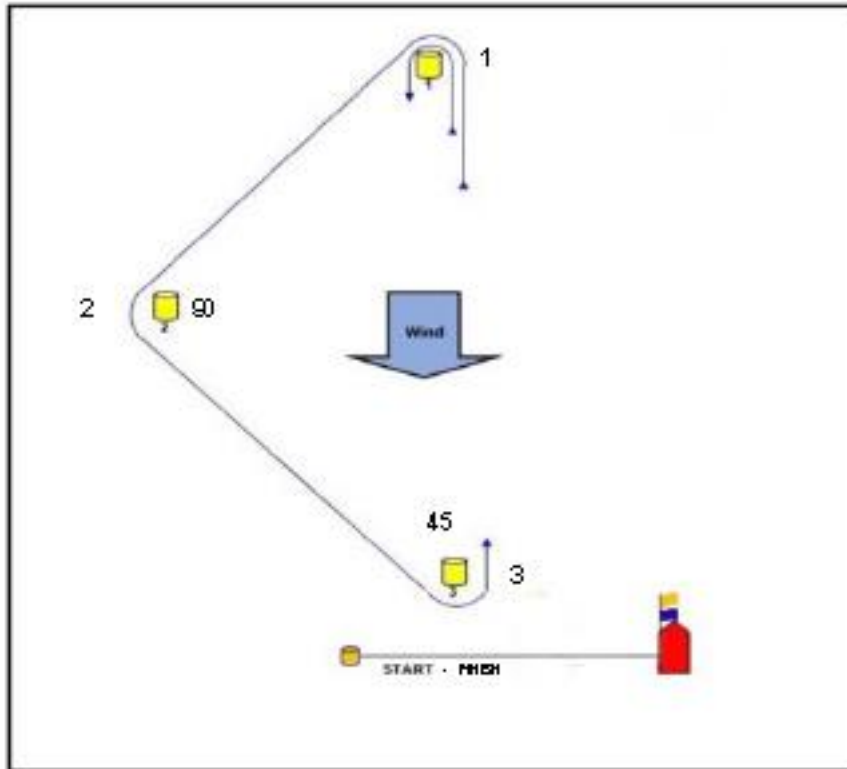
Please contact... **PORT OF YAMBA YACHT CLUB.** Yamba Marina 3 Yamba Road, YAMBA, NSW 2464

Commodore:	Victor Holmes	<a href="mailto:commodore.pyyc@outlook.com">commodore.pyyc@outlook.com</a>	Mob: 0419 275 206
Rear Commodore:	Justin Gibson	<a href="mailto:darkhorse72@gmail.com">darkhorse72@gmail.com</a>	Mob: 0449 656 377
Treasurer/Secretary:	Peter Saunders	<a href="mailto:kpsaunders@westnet.com.au">kpsaunders@westnet.com.au</a>	Mob: 0418 768 164
Publicity Officer:	Bill Grainger	<a href="mailto:info.pyyc@gmail.com">info.pyyc@gmail.com</a>	Mob: 0411 877 499
PYYC Handicapper:	Andrew Soesan	<a href="mailto:andrewsoesan@outlook.com">andrewsoesan@outlook.com</a>	Mob: 0490 118 009

**APPENDIX A.1 – VENUE – YAMBA MARINA & SURROUNDS**



APPENDIX B – INDICATIVE COURSES



NUMERAL PENNANT	MARK ROUNDINGS (Leave all Marks to PORT) (Courses to be mirrored, varied or reconfigured to suit conditions)	TYPE (RTC)
1	START – 1 – 2 – 3 – 1 – 3 – 1 – 2 – 3 -1 - FINISH	T/W/T
2	START – 1 – 2 – 3 – 1 – 3 – 1- FINISH	T/W
3	START – 1 – 3 – 1 -3 -1 - FINISH	W3
4	START – 1-3 – 1 – 3 – 1 - 3 -1 - FINISH	W4
5	As advised at Compulsory Skipper's Briefing Dependent upon Wind, tide & current flow	Passage

SAMPLE COURSES